

**LEGEND**

AREA OF FULL DEPTH PAVEMENT WIDENING

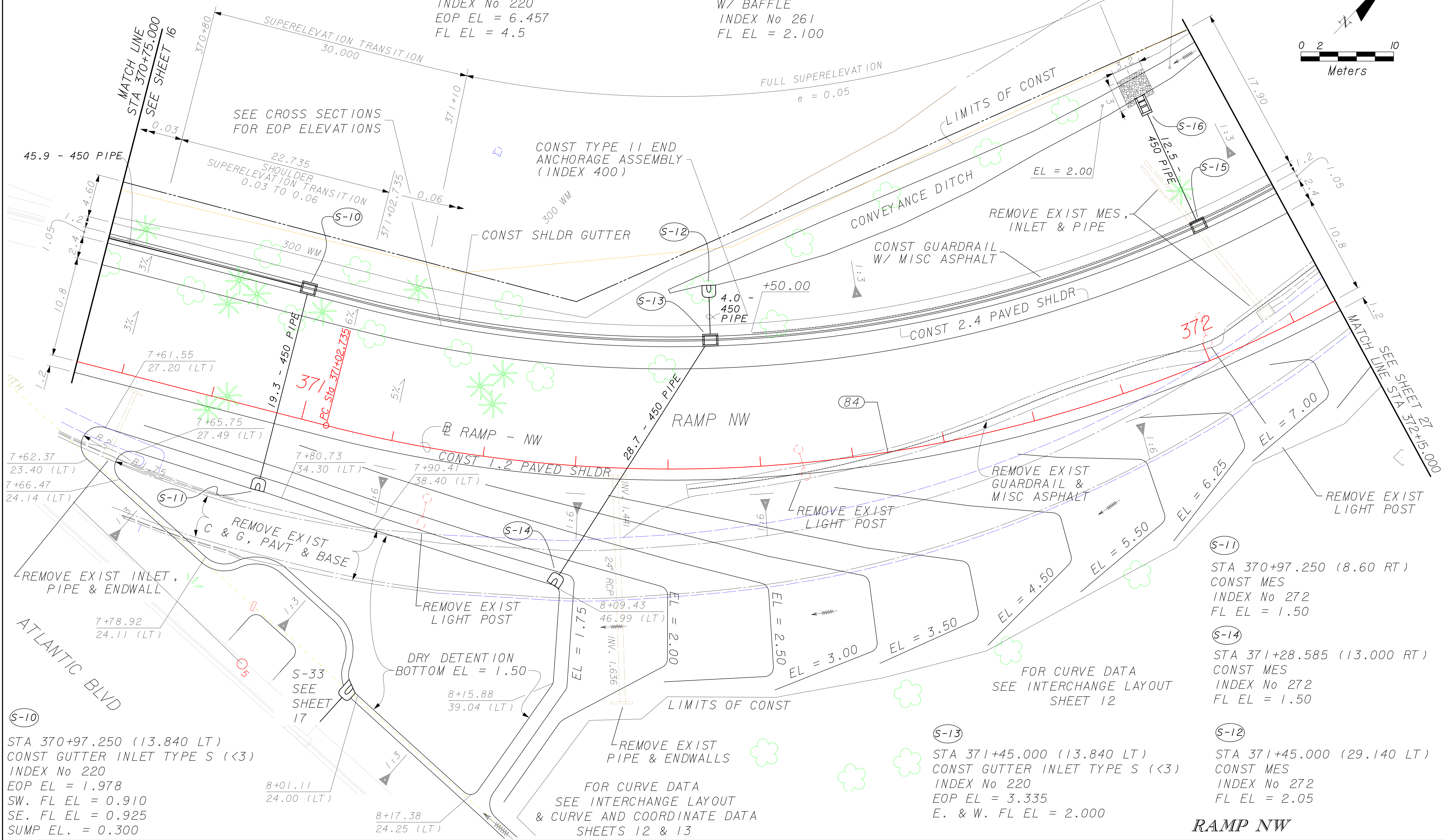
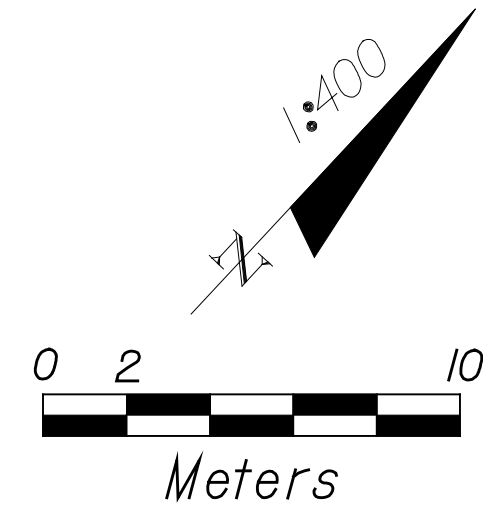
(S-15)

STA 372+05.000 (13.840 LT)  
 CONST GUTTER INLET TYPE S (<3)  
 INDEX No 220  
 EOP EL = 6.457  
 FL EL = 4.5

(S-16)

STA 372+05.000 (29.13 LT)  
 CONST U-TYPE CONC ENDWALL  
 W/ BAFFLE  
 INDEX No 261  
 FL EL = 2.100

CONST FABRIC-FORMED CONCRETE RIPRAP



(S-10)  
 STA 370+97.250 (13.840 LT)  
 CONST GUTTER INLET TYPE S (<3)  
 INDEX No 220  
 EOP EL = 1.978  
 SW. FL EL = 0.910  
 SE. FL EL = 0.925  
 SUMP EL. = 0.300

(S-11)  
 STA 370+97.250 (8.60 RT)  
 CONST MES  
 INDEX No 272  
 FL EL = 1.50

(S-14)  
 STA 371+28.585 (13.000 RT)  
 CONST MES  
 INDEX No 272  
 FL EL = 1.50

(S-12)  
 STA 371+45.000 (29.140 LT)  
 CONST MES  
 INDEX No 272  
 FL EL = 2.05

(S-13)  
 STA 371+45.000 (13.840 LT)  
 CONST GUTTER INLET TYPE S (<3)  
 INDEX No 220  
 EOP EL = 3.335  
 E. & W. FL EL = 2.000

**RAMP NW**

REVISIONS					
DATE	BY	DESCRIPTION	DATE	BY	DESCRIPTION

**ADAIR & BRADY, INC.**  
 3461 FAIRLANE FARMS ROAD  
 WELLINGTON, FLORIDA 33414  
 CERTIFICATE OF AUTHORIZATION No: 604  
**ALBERT E. ROSE** 49230  
 ENGINEER OF RECORD P.E. NUMBER

STATE OF FLORIDA DEPARTMENT OF TRANSPORTATION		
ROAD NO.	COUNTY	FINANCIAL PROJECT ID
814	BROWARD	228223-1-52-01

**PLAN**

SHEET NO.  
26